

CBD ISOLATE

This Certificate represents exact test data from Third Party Lab analysis, performed in accordance with the requirements of ISO/IEC 17025, and is reported in its entirety.

CN: Cannabinoid Profile & Potency [WI-10-04]

ID	Weight %	Conc.
Δ9-THC	-	-
THCV	-	-
CBD	99.66 wt%	996.60 mg/g
CBDV	0.16 wt %	1.63 mg/g
CBG	-	-
CBC	-	-
CBN	-	-
THCA	-	-
CBDA	-	-
CBGA	-	-
Total:	99.82 wt%	998.23 mg/g
Max THC:	-	-
Max CBD:	99.66wt%	996.60 mg/g

The sample was analyzed for plant-based cannabinoids by Convergence Chromatography (CC). The collected data was compared to data collected for certified reference standards at known concentrations.

Max THC (and Max CBD) are calculated values for total cannabinoids after heating, assuming complete decarboxylation of the acid 1D the neutral form. It is calculated based on the weight loss of the acid group during decarboxylation: Max THC= (0.877 x THCA) + THC

EA: Elemental Analysis [WI-10-13] ND= None detected to the Method Detection Limit (MDL)

Symbol	Metal	Conc. ¹	MDL	Limits ²	Status
Al	Aluminum	1,243 ug/kg	5 ug/kg	-	
As	Arsenic	ND	4 ug/kg	1500 ug/kg	PASS
Cd	Cadmium	ND	1 ug/kg	1500 ug/kg	PASS
Ca	Calcium	ND	500 ug/kg	-	
Cr	Chromium	11 ug/kg	5 ug/kg	2500 ug/kg	PASS
Co	Cobalt	ND	10 ug/kg	-	
Cu	Copper	ND	500 ug/kg	100000 ug/kg	PASS
Fe	Iron	620 ug/kg	5 ug/kg	-	
Pb	Lead	ND	2 ug/kg	5000 ug/kg	PASS
Mg	Magnesium	1,237 ug/kg	500 ug/kg	-	
Mn	Manganese	ND	500 ug/kg	-	
Hg	Mercury	ND	2 ug/kg	1500 ug/kg	PASS
Mo	Molybdenum	ND	5000 ug/kg	10000 ug/kg	PASS
Ni	Nickel	ND	500 ug/kg	1500 ug/kg	PASS
P	Phosphorus	3,303 ug/kg	500 ug/kg	-	
K	Potassium	349 ug/kg	5 ug/kg	-	
Se	Selenium	ND	10 ug/kg	-	
Ag	Silver	ND	10 ug/kg	-	
s	Sulfur	4,494 ug/kg	5 ug/kg	-	
Sn	Tin	ND	5000 ug/kg	-	
Zn	Zinc	55 ug/kg	5 ug/kg	-	

1) ND = None detected to the Method Detection Limit (MDL)

2) USP recommended limits for Elemental Analysis.

SAMPLE CERTIFICATION

Certificate ID: 29203

HempMedspx.com

13831 Danielson Street, Poway, CA 92064 • info@hempmeds.com • +1 866-273-8502

Page 1 of 3

CBD ISOLATE

PST: Pesticide Analysis [WI-10-II]

The client sample was analyzed for pesticides using Liquid Chromatography with Mass Spectrometric detection (LC/MS/MS). The method used for sample prep was based on the European method for pesticide analysis (EN 15662).

Analyte	Result	Units	LLD	Limits (ppb)	Status
Abamectin	ND	ppb	0.20	10	PASS
Azoxystrobin	ND	ppb	0.10	10	PASS
Bifenezate	ND	ppb	0.10	10	PASS
Bifenthrin	ND	ppb	0.20	10	PASS
Cyfluthrin	ND	ppb	0.50	10	*
Daminozide	ND	ppb	10.00	10	PASS
Dichlorvos	ND	ppb	3.00	10	*
Etoxazole	ND	ppb	0.10	10	PASS
Fenoxycarb	ND	ppb	0.10	10	PASS
Imazalil	ND	ppb	0.10	10	PASS
Imidacloprid	ND	ppb	0.10	10	PASS
Myclobutanil	ND	ppb	0.10	10	PASS
Paclobutrazol	ND	ppb	0.10	10	PASS
Piperonyl butoxide	ND	ppb	0.10	10	PASS
Pyrethrin	ND	ppb	0.1	10	PASS
Spinosad	ND	ppb	0.1	10	PASS
Spiromesifen	ND	ppb	0.10	10	PASS
Spirotetramat	ND	ppb	0.10	10	PASS
Trifloxystrobin	ND	ppb	0.10	10	PASS

Analytes marked with (*) indicate analytes for which no recovery was observed for a pre-spiked matrix sample.

MBJ: Microbiological Contaminants [WI-10-09]

Symbol	Analysis	Results	Units	Limits*	Status
AC	Total Aerobic Bacterial Count	<100	CFU/g	100,000 CFU/g	PASS
CC	Total Coliform Bacterial Count	<100	CFU/g	1,000 CFU/g	PASS
EB	Total Bile Tolerant Gram Negative Count	<100	CFU/g	1,000 CFU/g	PASS
YM	Total Yeast & Mold	<100	CFU/g	10,000 CFU/g	PASS

Note: All recorded Microbiological tests are within the established limits.

MB2: Pathogenic Bacterial Contaminants [WI-10-10]

This test method was performed in accordance with the requirements of ISO/IEC 17025. These results relate only to the test article listed in this report. Reports may not be reproduced except in their entirety.

Analysis	Results	Units	Limits*	Status
E. coli	Negative	NA	Non Detected	PASS
Salmonella	Negative	NA	Non Detected	PASS

Note: All recorded pathogenic bacteria tests passed.

SAMPLE CERTIFICATION

Certificate ID: 29203

HempMedspx.com

13831 Danielson Street, Poway, CA 92064 • info@hempmeds.com • +1 866-273-8502

CBD ISOLATE

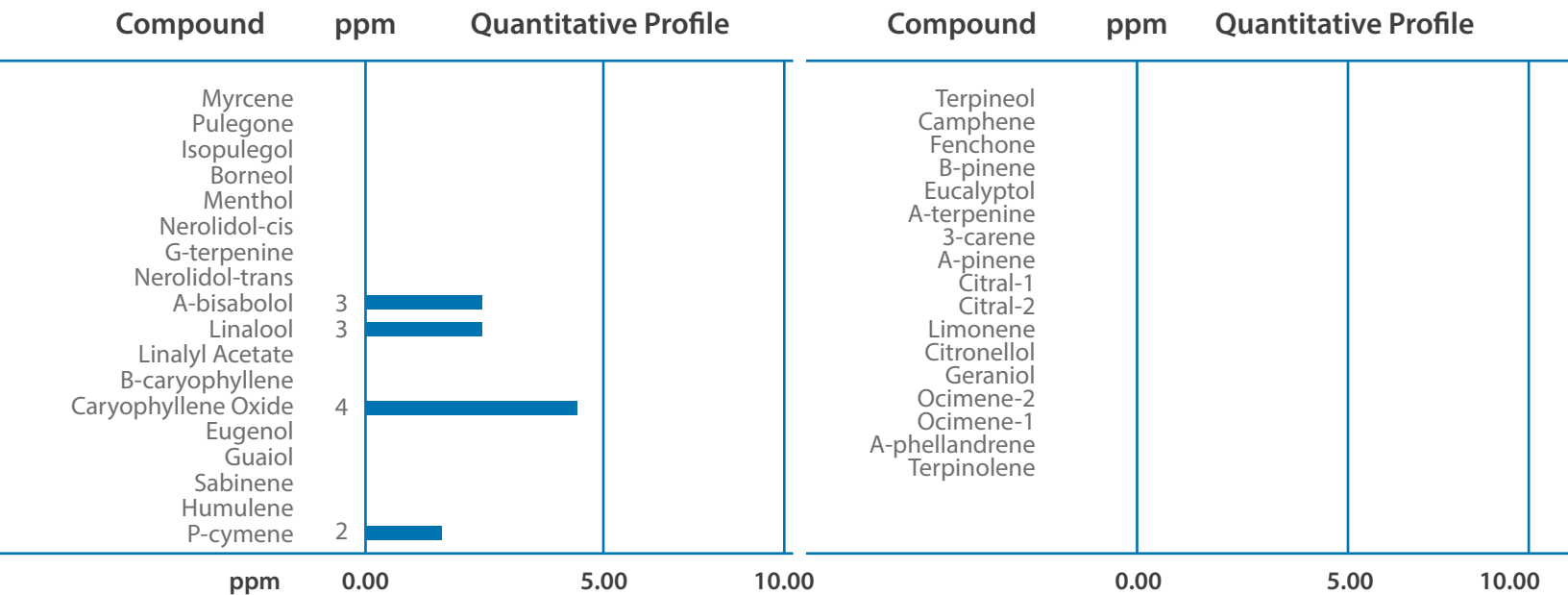
MY: Mycotoxin Testing [WI-10-05]

This test method was performed in accordance with the requirements of ISO/IEC 17025. These results relate only to the test article listed in this report. Reports may not be reproduced except in their entirety.

Test ID	Results	MDL	Limits*	Status
Total Aflatoxin	<MDL	3ppb	<20 ppb	PASS
Total Ochratoxin	<MDL	2ppb	<20 ppb	PASS

TP: Terpenes Profile [WI-10-08]

The client sample was analyzed by Head-Space Gas Chromatography (HS-GC). The collected data was compared to data collected for certified reference standards at known concentrations.



Total Terpene: <0.1 wt%

* Indicates qualitative calculation based on recorded peak areas.

SAMPLE CERTIFICATION

Certificate ID: 29203